

Arend-Jan Krooneman



Floating Villas

Along the existing quay high concrete piers have been attached. These create docking spots for the floating villas; luxurious dwellings built on a floating concrete hull. The structure exists out of three concrete slabs with wooden walls and flooring between them.

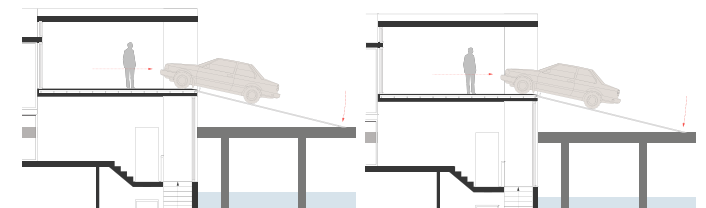
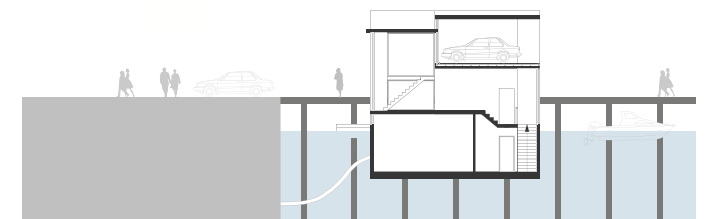
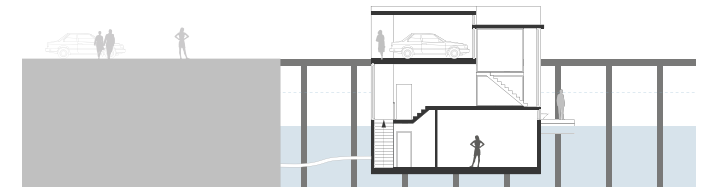
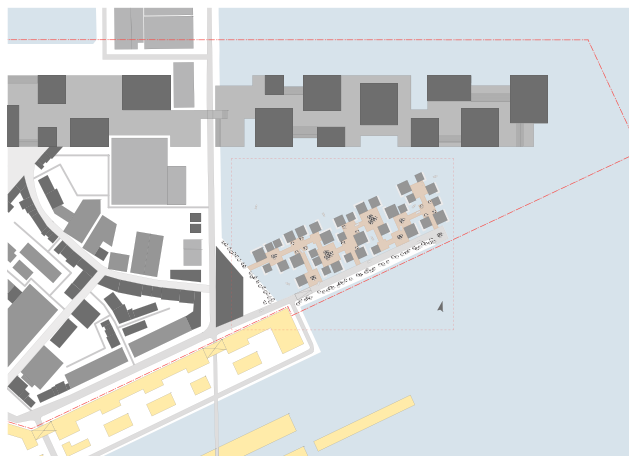
The dwellings have carports so residents can park their car inside their house. This avoids cars being damaged during a possible flood. When there is a flooding the housing units simply float upwards and remain dry. By pulling out an emergency ramp the residents can escape the area with their car. The villas also have an internal dock where boats can be docked.

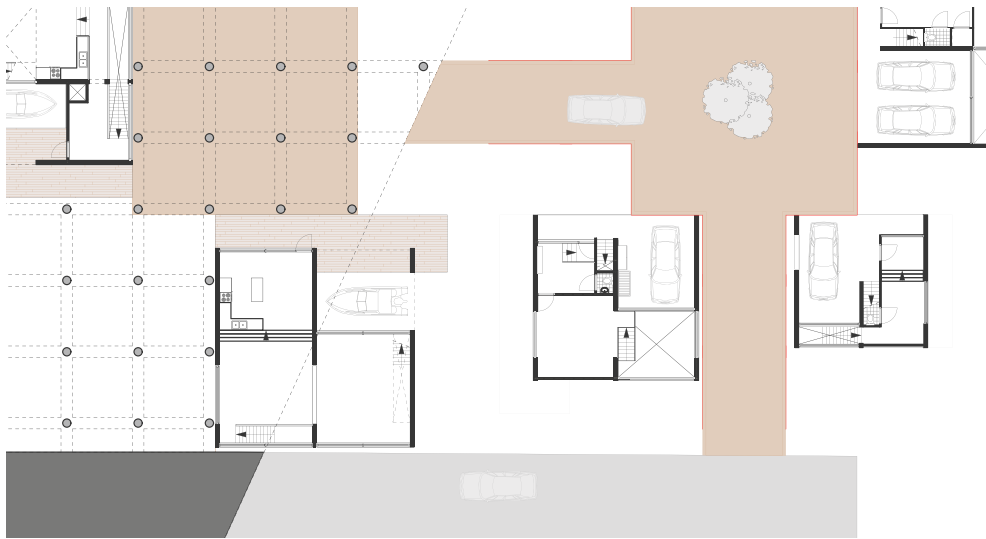
The area consists out of three layers, the top layer is the public area on the piers and the public functions inside the dwellings. When going a level lower, you will enter a semi-public area. Underneath the piers is an area only for residents. Inside the dwellings the dining rooms and kitchens are on this level. The lowest layer is the most private and is situated under water; the bedrooms and bathrooms are in the basement of the dwelling.

▲ Impression
View from the IJ & Interior

▼ Masterplan
High piers along the dock

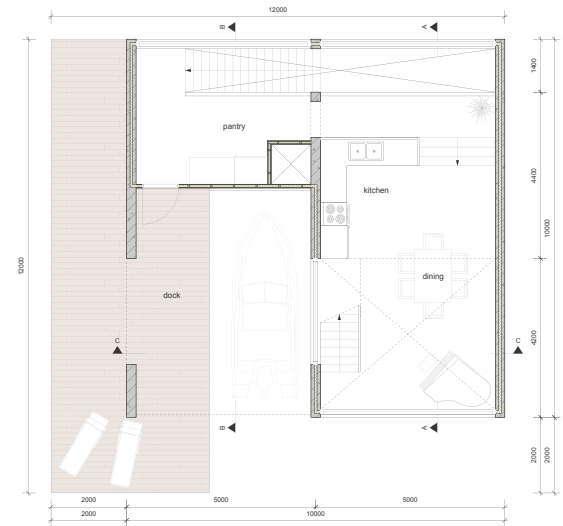
▼ Diagrams water protection
In case of a flood, the building will float up, cars escape over a ramp





◀ Ground floor/
first floor
1:500

▶ Ground floor
1:200



◀ South and west
elevations
1:200

▶ Impressions
View from
the street &
Interior

